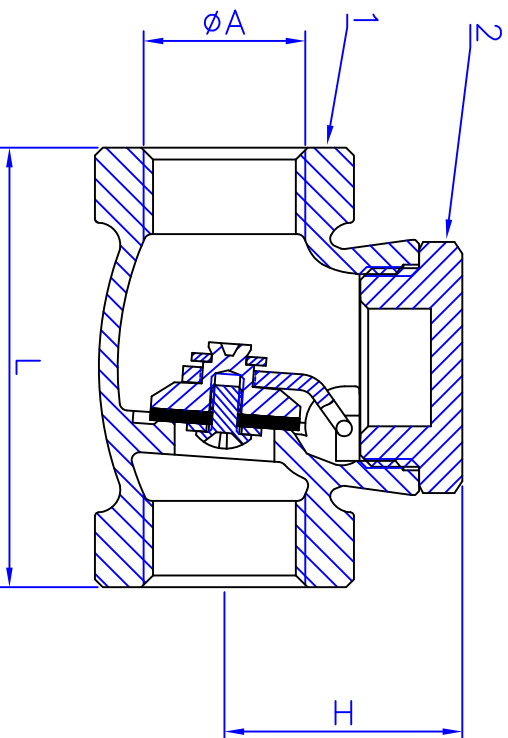
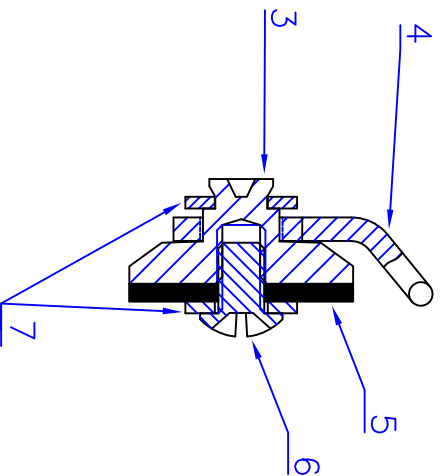


PART NO.
零件編號



NOMENCLATURE & MATERIAL

NO.	PART NAME	MATERIAL	SPEC. ASTM
1	BODY	CAST BRONZE	B584-C84400
2	CAP COVER	BRASS	B16-C36000
3	DISC	BRASS	B16-C36000
4	HINGE	BRASS PLATE	
5	SEAT	D2000	NBR
6	SCREW	STEEL	SS304
7	WASHER	STEEL	SS304

DIMENSION (mm)

NO.	SIZE	1/2"	3/4"
φA	1/2" NPT	3/4" NPT	
H	30	35	
L	56	64	

WORKING PRESSURE: 125S 200WOG

TESTING PRESSURE: SHELL 80PSI AIR
SEAT 80PSI AIR

REVISION	DESCRIPTION	DATE	BY	APP
設 變	明 確	日期	設 變 者	核 准

NAME. FIRE TRIM VALVE 90° SWING CHECK VALVE			
名稱 SOFT SEAT			
MATERIAL. CAST BRONZE			
材質			
DWN. 楊聖鋒	CKD.	APP.	
繪 圖 2005.3.13	審 核	核 准	
THIRD ANGLE PROJECTION	TOLERANCE CLASS	SCALE	比例
第三角法	公差等級 CNS401816級	.	.



芊信股份有限公司

CHIENHSIN YANG CO., LTD.

DWG NO. UB-05100A