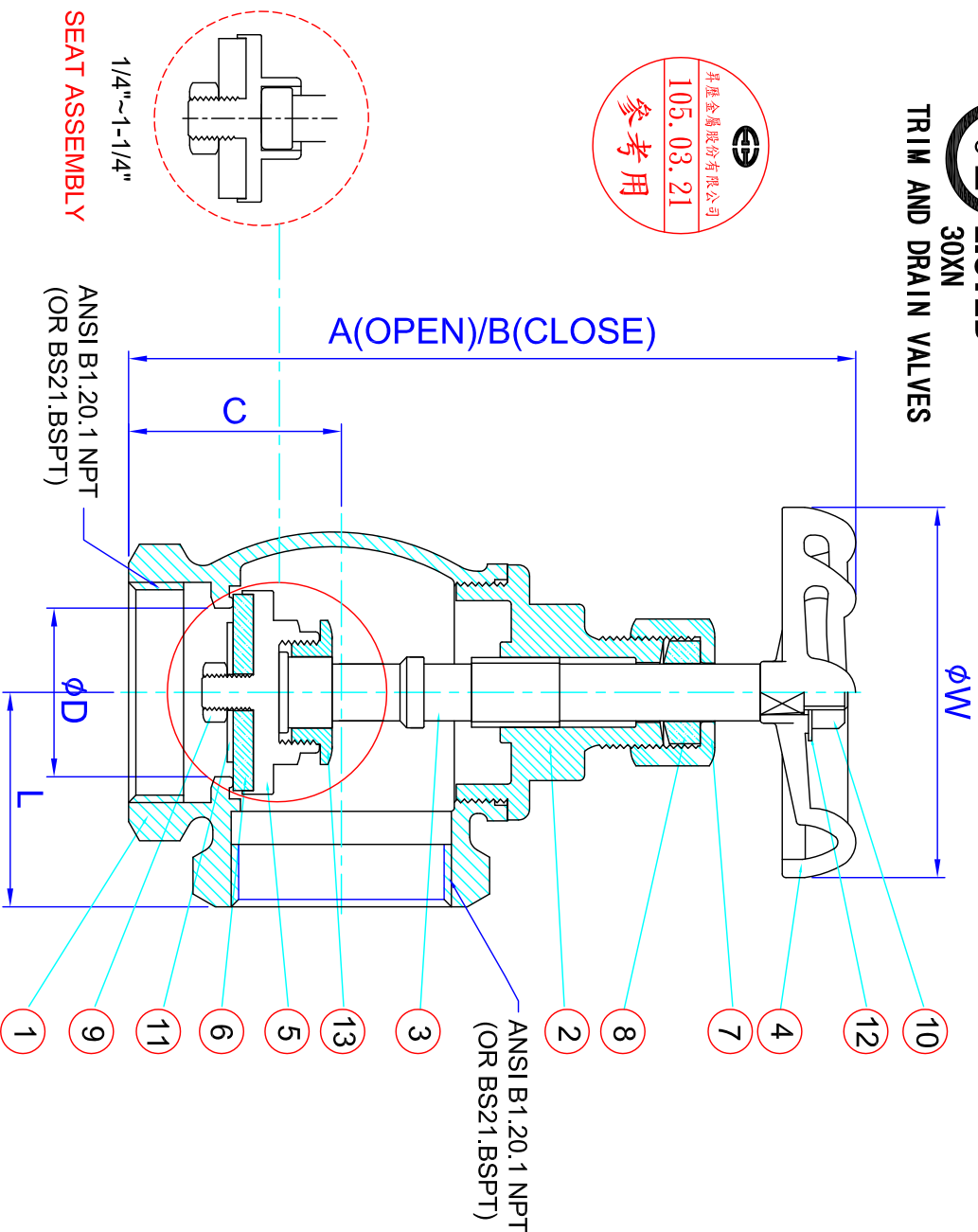


FIRE PROTECTION SERVICE BRONZE ANGLE VALVE



TRIM AND DRAIN VALVES



DIMENSIONS (MM)

NO.	A±3	B±3	C±0.5	L±0.5	φW±3	φD
SIZE						
1/4"	93.5	85	22.5	21.5	53	8
3/8"	93.5	85	23	21	53	8
1/2"	108	100.6	29	27	58	13.5
3/4"	123	111.5	31	30.8	58	16.5
1"	141.5	130	36	37	74	23
1-1/4"	161.5	141.5	43.5	43	78.5	28
1-1/2"	197.5	174.5	50	49.5	78.5	34
2"	223	201	58	58	99	45

MATERIAL LIST

NO.	NAME	MATERIAL	QTY
1	BODY	BRONZE C84400	1
2	BONNET	BRASS (1/4"-3/4")	1
		BRONZE C84400(1"-2")	
3	STEM	BRASS	1
4	HANDWHEEL	CAST IRON	1
5	DISC HOLDER	BRASS (1/4"-1-1/4")	1
		FORGED BRASS (1-1/2"-2")	
6	SEAT	BUNAN	1
7	PACKING NUT	BRASS	1
8	GLAND PACKING	PTFE	1
9	LOOK NUT	BRASS	1
10	WHEEL NUT	STEEL	1
11	WASHER (1-1/2"-2")	BRASS	1
12	NAME PLATE	ALUMINIUM	1
13	DISC NUT (1-1/2"-2")	BRASS	1

Working Pressure: 175 PSI / CWP
 Seat Test Pressure: 350 PSI or 80 PSI Air
 Shell Test Pressure: 350 PSI or 80 PSI Air

General Tolerance

0.5-6	±0.1
6-30	±0.2
30-120	±0.3
120-315	±0.5
315-1000	±0.8
1000-2000	±1.2

2106AHU000 MAT'L TABLE ANGLE VALVE

REVISION	DESCRIPTION	DATE	DMN.	BY	APPD.	APPD.	DMG NO.	DATE	UNIT	SCALE	TOLERANCE CLASS	Rev
3												
2												
1												

TEL:(04)7712691~2 FAX:(04)7712693